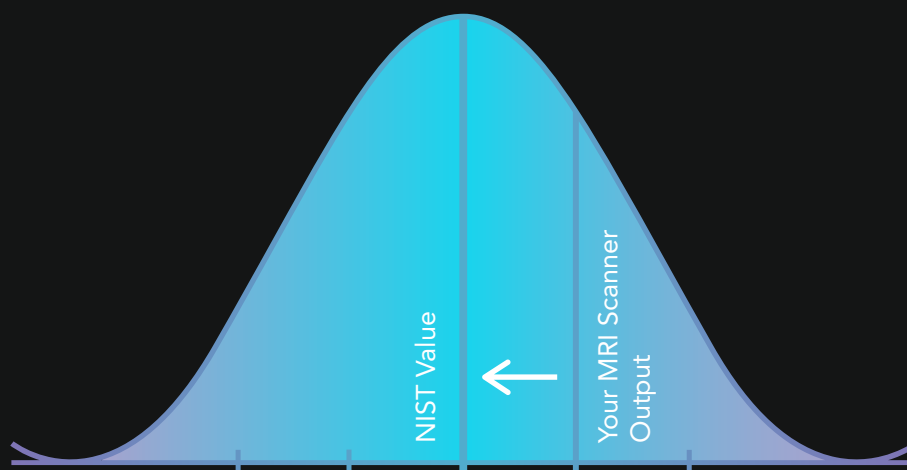




Introducing qCal-MR[®]

The quantitative MRI QC software that provides a cohesive known baseline for qMRI researchers everywhere.

Know the reliability of MRI scanner outputs so human health insights can be studied confidently.



The same qMRI equations.
Now calculated for you by qCal.



QA/QC statistics are now calculated for you within a matter of minutes after qCal processes your DICOM files or folders.

- T1, variable flip angle (VFA), and the apparent diffusion coefficient (ADC) are all compared to highly accurate NIST values.
- Signal-to-noise ratio (SNR), as well as the repeatability data, repeatability coefficient, and within-subject coefficient of variance are calculated.

Comprehensive Reporting



QIBA Diffusion Phantom Protocol on 128: Diffusion Phantom

[Download CSV Report](#) [Printable Report View](#) [Edit Vols](#)

Study Information

Upload Date	2021-12-20 9:40 PM
Upload Description	UMich QIBA Conformance Test
Study Description	UMich QIBA Conformance Test: OLD QIBA THEN NEW QIBA AT ICE TEMP
Study Date	2019-12-23 3:07 AM
Institution Name	UNIVERSITY OF MICHIGAN Main
Phantom Serial Number	
Station Name	UI13T_RES
Scanner Serial Number	42001
Scanner Software Versions	5.4.1, 5.4.1.1
Receive Coil Name	MULTI COIL
Scanner Manufacturer	Philips Medical Systems
Scanner Model	Ingenia

Protocol Conformance

Acquisition Conformance: Full
 Scan Data Conformance: Passed ✔
 • Performed 8 checks and found 0 values that exceeded the limits.

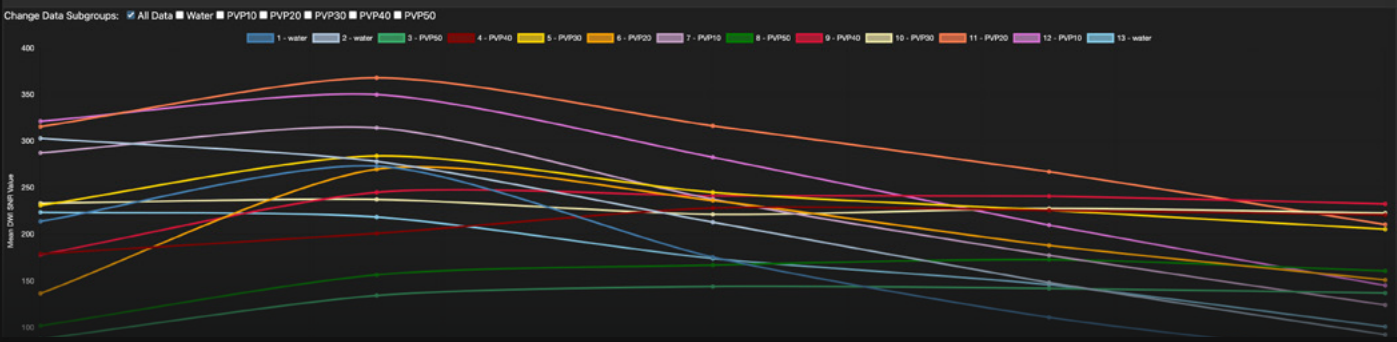
ADC VOI Statistics

Label	Contents	# Voxels	NIST Value um ² /s	Mean um ² /s	Bias um ² /s	Bias Percent %	Max B-Value Dependence % (associated b-value pair)	SNR B0	SNR B500	SNR B1000	SNR B1500	SNR B2000	RC um ² /sec	Random Error %	wCV %
<i>Vial 1 - Limits</i>															
1	water	9048	1109	1118	9.07	0.82	1.63 (500, 2000)	214	273	176	111	68.3	1.71	0.57	0.055
2	water	9048	1109	1119	10.4	0.94	1.57 (500, 2000)	303	278	213	148	92.5	1.68	0.42	0.054
3	PVP50	9048	110	125	15.0	13.6	26.0 (500, 2000)	87.6	134	144	142	137	1.74	4.52	0.50
4	PVP40	9048	220	226	5.92	2.69	18.3 (500, 2000)	179	201	228	226	221	1.12	1.30	0.18
5	PVP30	9048	380	396	16.4	4.31	8.85 (500, 2000)	231	284	245	226	206	0.72	0.66	0.065
6	PVP20	9048	579	590	11.5	1.99	0.41 (1000, 2000)	137	270	236	188	151	2.38	0.69	0.15
7	PVP10	9048	817	827	10.0	1.23	0.60 (500, 2000)	287	314	238	177	124	0.69	0.43	0.030
8	PVP50	9048	110	109	-0.62	-0.56	11.1 (500, 2000)	102	157	167	173	161	2.07	4.39	0.68
9	PVP40	9048	220	231	10.8	4.91	3.82 (500, 1500)	178	245	241	241	233	0.83	1.11	0.13
10	PVP30	9048	380	399	19.0	5.00	5.75 (500, 2000)	233	237	222	228	223	0.76	0.49	0.069
11	PVP20	9048	579	605	25.7	4.44	0.73 (500, 2000)	316	368	316	267	211	0.90	0.38	0.054
12	PVP10	9048	817	832	14.7	1.80	0.46 (500, 2000)	321	350	283	210	145	1.19	0.36	0.052

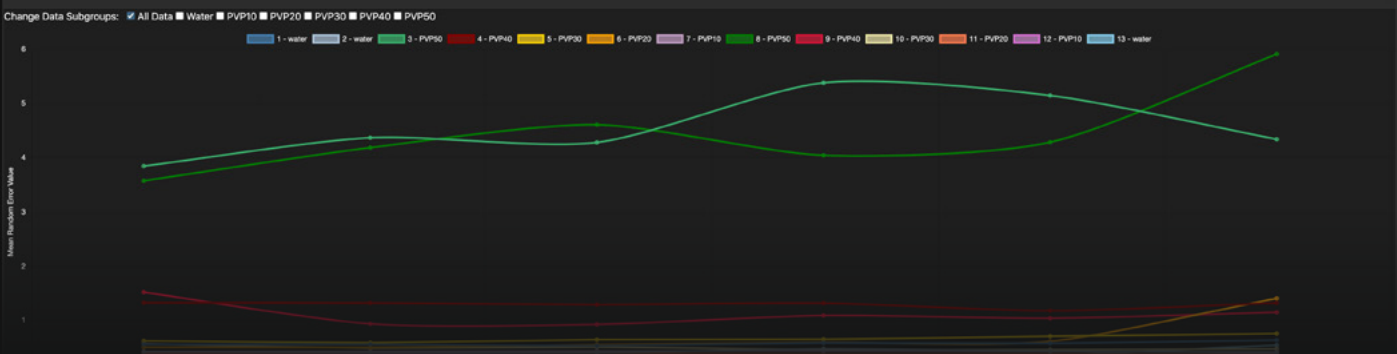
NIST ADC Value vs Measured ADC Value



B-Value vs SNR



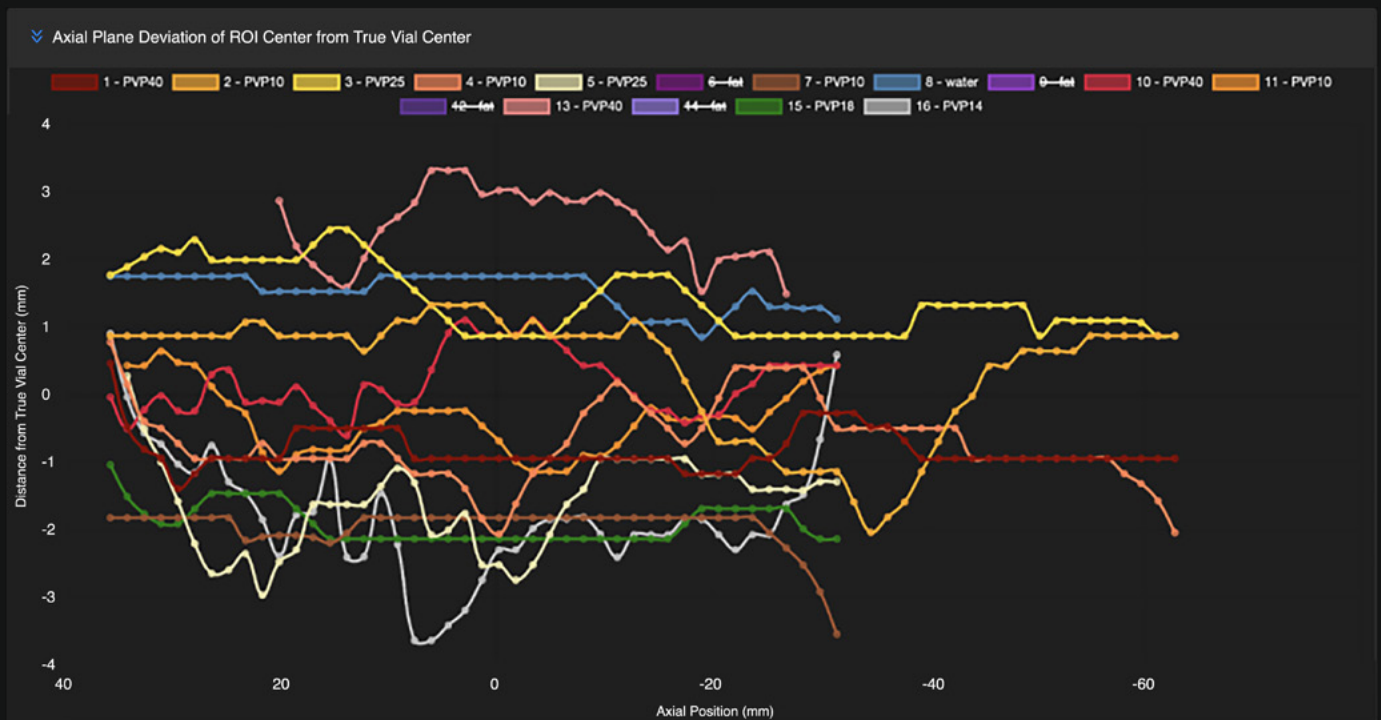
Random Error Value vs Axial Position



Say goodbye to coding and say hello to automated qMRI calibration.



- qCal is here to save you valuable research and clinical time so you can transform The Known into incredible human health insights.
- DICOM-to-results in minutes with just a click of a few buttons! Regions of interest (ROI) are automatically found and calculated for you.

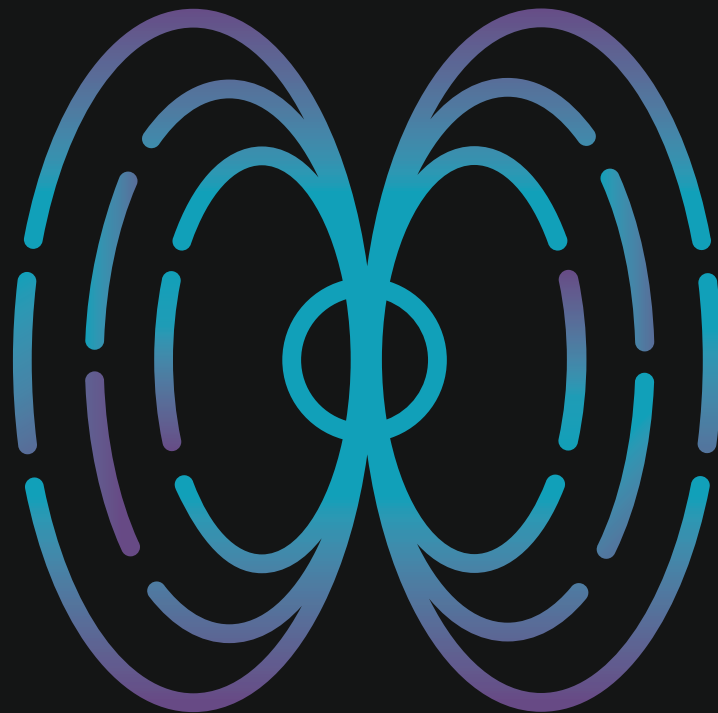


Connect with your qMRI research colleagues around the world so you'll never be out-of-phase



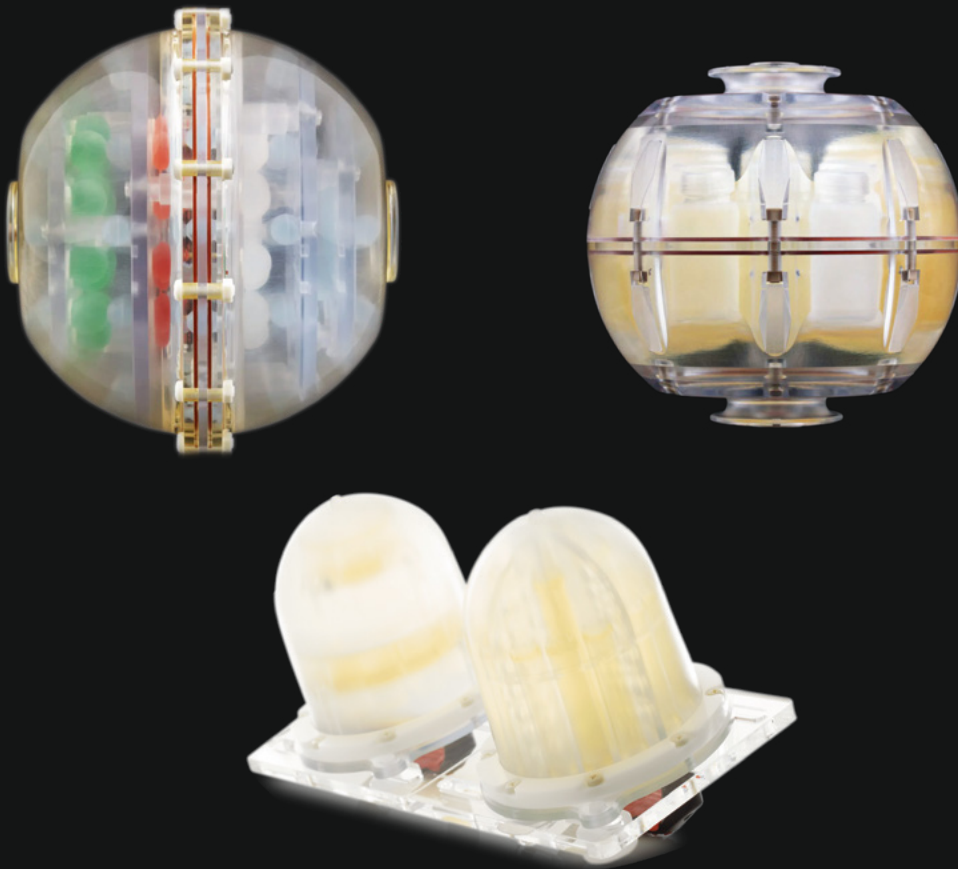
qCal's robust cloud-based group collaboration tools allow you to share datasets seamlessly, no matter where you are.

- Collaboration on qCal-MR™ occurs via shared folders. You can create endless parent and subfolders to house your data so you can share it with your colleagues.
- An especially great tool for any qMRI researcher conducting a multi-site clinical trial so you can compare quality assurance data over a variety of sites!



Use qCal with CaliberMRI's Premium System Phantom, Diffusion Phantom, and Legacy Breast Phantom

qCal compatibility with the CaliberMRI Essential System Phantom, System Phantom Lite, and Premium Breast Phantom is currently in development.



p 1300 934 947 **f** 1300 734 712
w www.symbioticdevices.com.au
e team@symbioticdevices.com.au
a Unit 6, 105-111 Ricketts Road
Mount Waverley, VIC 3149

team@symbioticdevices.com.au | Ph: 1300 934 947