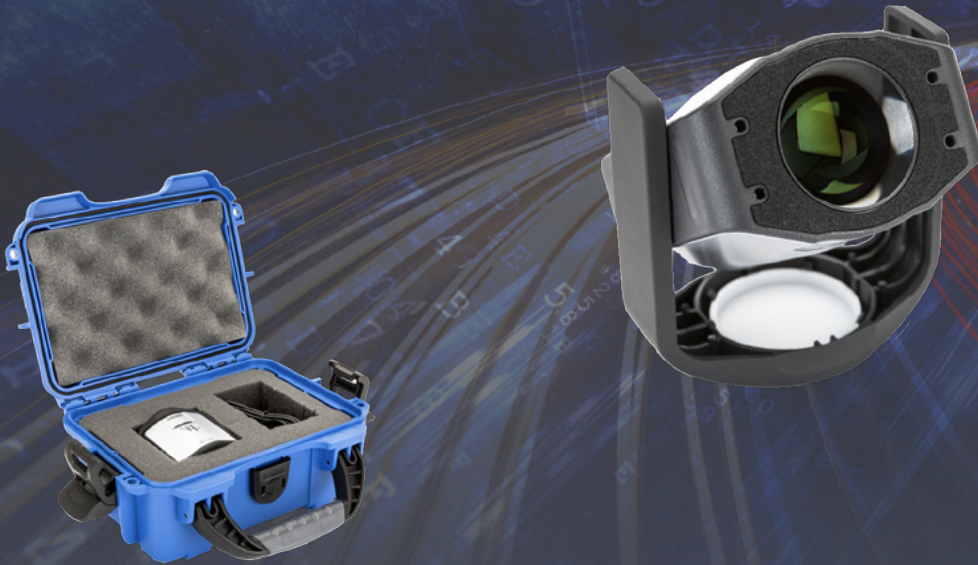




VPixx Technologies
Vision Science Solutions

VideoBahn™
The NEW fast road to SUPERIOR data

X-Rite i1Display Pro



- Returns CIE Lxy coordinates
- Integration with VIEWPixx and PROPixx devices
- USB powered
- Low cost

Low cost Colorimeter

OVERVIEW

The i1Display Pro colorimeter features an advanced, high-end optical system with custom-designed filters. It provides a near perfect match to the color perception of the human visual system, delivering superior color measurement results. i1Display Pro supports all modern display technologies, including LED backlight and wide gamut displays. It is spectrally calibrated, making it fully field upgradeable to support future display technologies.

An innovative Swiss-engineered design makes the i1Display Pro much more affordable than previous generations of colorimeters. The i1Display Pro connects to your computer over a USB interface, allowing your own software to initiate automated measurements and acquire data.



Authorized Distributor



p 1300 934 947 **f** 1300 734 712
w www.symbioticdevices.com.au
e team@symbioticdevices.com.au
a Unit 6, 105-111 Ricketts Road
Mount Waverley, VIC 3149

SPECIFICATIONS

GENERAL SPECIFICATIONS

- Color-accurate measuring of all modern display types
- Contact or non-contact display measurement modes
- Ability to measure projector screens
- Capability to measure ambient light (color and illuminance)
- Specifically designed for modern LCD display technologies including CCFL, White LED, RGB LED, and Wide Gamut display technologies

OTHER SPECIFICATIONS

- Number of channels: 3
- Measurement area (in contact): 24 mm diameter circle
- Acceptance angle: ± 5 degrees (at half max)
- Luminance measurement range: 0.1 cd/m² to 1,000 cd/m²
- Minimum measurement integration time: 0.1 sec / measurement @ 100 cd/m²
- Maximum measurement integration time: 6 sec / measurement @ 0.10 cd/m²
- Effective measurement primaries: CIE standard (1931) observer
- Ambient measurement angle: 160 degrees cosine response
- Ambient illuminance measurement range: 0.5 lm/m² to 5,000 lm/m²

MEASUREMENT PERFORMANCE

- Accuracy: illuminant A under X-Rite's standard measurement conditions
 - Color = ± 0.004 x, y @ 100 cd/m²
 - Luminance = $\pm 4.0\%$ @ 100 cd/m²
- Short-term repeatability: illuminant A under X-Rite's standard measurement conditions
 - Color = ± 0.001 x, y @ 100 cd/m²
 - Luminance = $\pm 1.0\%$ @ 100 cd/m²

SOFTWARE

Software support includes a low-level ANSI C API, MATLAB/Octave and Python libraries for use under Mac OS X, Microsoft Windows, and Linux.



Authorized Distributor

p 1300 934 947 **f** 1300 734 712
w www.symbioticdevices.com.au
e team@symbioticdevices.com.au
a Unit 6, 105-111 Ricketts Road
Mount Waverley, VIC 3149

